

English Installation Instructions

The PK55XX\RFK55XX keypads can be used on security systems with up to 64 zones. These keypads are compatible with the following DSC security systems:

- PC580 • PC585 • PC1555MX • PC1565
- PC1616 • PC1832 • PC1864 • PC5005
- PC5008 • PC5010 • PC5015 • PC5016
- PC5020

The RFK55XX keypads combine a wireless receiver with the respective PK55XX keypad.

Specifications

- Temperature range: -10°C to +55°C (14°F to 131°F), Temperature range for UL/ULC: 0°C to +49°C (32°F to 120°F)
- Humidity (MAX): 93%R.H.
- Plastic enclosure protection degree: IP30, IK04
- Voltage rating: 12VDC nominal
- Connects to control panel via 4-wire Keybus
- 1 keypad zone input/PGM output*
- PK55XX Current draw: 50mA (standby)/125mA (maximum)
- RFK55XX Current draw: 75mA (standby)/135mA (maximum)
- Wall mount tamper
- 5 programmable function keys
- Ready (Green LED), Armed (Red LED), Trouble (Yellow LED), AC (Green LED)
- Low temperature sensor
- Frequency: 433.92MHz (RFK55XX-433 Only)
- Up to 32 wireless zones (RFK55XX Only)

NOTE: * Zone not to be programmed as Fire type or 24h type.

Unpacking

The Power keypad package includes the following parts:

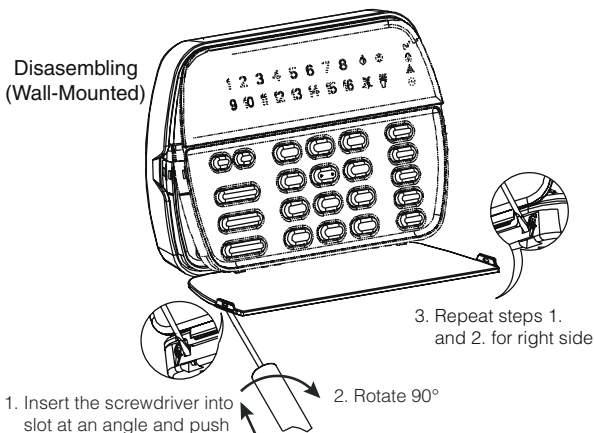
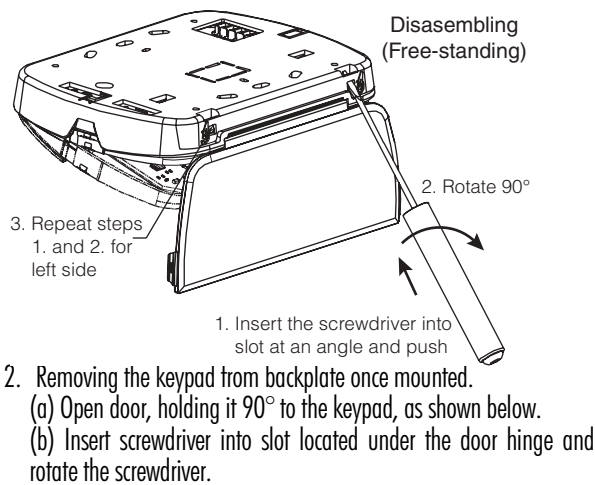
- One Power keypad
- Four mounting screws
- 2 end-of-line resistors
- Keypad inner door labels
- 1 tamper switch
- Installation Instructions

Mounting

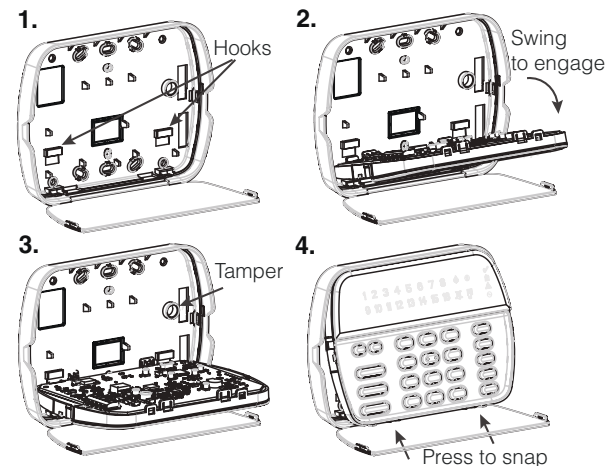
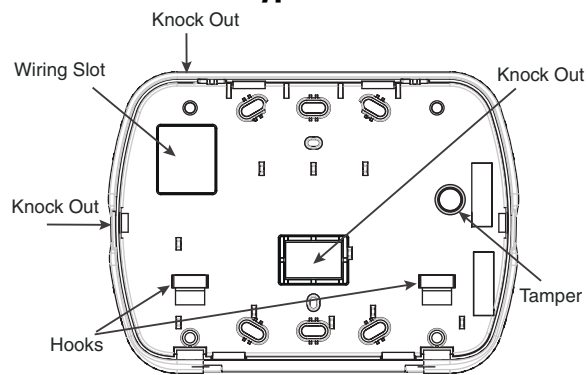
You should mount the keypad where it is accessible to designated points of entry and exit. Once you have selected a dry and secure location, perform the following steps to mount the keypad.

Disassemble Keypad

1. Removing the keypad from the backplate for the first time.
 - (a) Position the keypad as indicated, insert screwdriver and rotate.



Mount and Wire Keypad

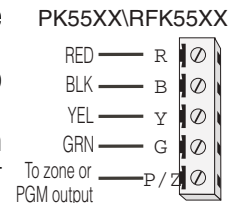


1. Secure Keypad to wall using mounting holes. Use all 4 screws provided unless mounting on a single gang box.
2. Place keypad into hooks on the backplate and swing down to engage.
3. Run wire through wiring slot or knockouts. Connect Keybus and PGM/Zone wiring to keypad. Place tamper switch into tamper hole on backplate.
4. Remove keypad from hooks. Place keypad into backplate, ensure the wire is pushed back into the wall as much as possible. Route the wire inside the keypad ensuring high components are avoided. Snap the front assembly closed, ensuring that there is no pressure to the keypad from the wire below.

NOTE: If any tension found between the front keypad assembly and wiring, please open the keypad reroute the wire and close again. Repeat these steps until the keypad is closed properly.

Wiring

1. Before wiring the unit, ensure that all power (AC transformer and battery) is disconnected from the control panel.
2. Connect the four Keybus wires from the control panel (red, black, yellow and green) to the keypad terminals. Refer to diagram:
3. If programmed as an input, you can connect a device - such as a door contact - to the 'P/Z' terminal of the keypad.



This eliminates the need to run wires back to the control panel for the device. To connect the zone, run one wire from the device to the 'P/Z' terminal and the other wire from the device to the B (black) terminal. For powered devices, run the red wire to the R (positive) terminal and the black wire to the B (negative) terminal. When using end of line supervision, connect the zone according to one of the configurations outlined in your system's Installation Manual.